



Graeme College

To strive for excellence by developing all to their full potential



WEEKLY NEWSLETTER Friday 3 July 2020

Message from the Headmaster

Quote:

“Endurance is the SILENT GIFT that no one needs or wants to hear.” Anonymous

Above picture: The new look and stunning additions to Grant House common room.

Change to Return Dates:

The Department of Basic Education has backtracked at the 11th hour, announcing that only certain Grades will be allowed to return to school. The decision centres around the department’s strategy to manage the health risk, especially with the current spike of COVID-19 cases in the country. This has caused significant frustration, as all staff have been working tirelessly to welcome back the Grade 10 group as well as the entire Foundation Phase on Monday.

According to the Department of Basic Education only Grade 6, 11 and Grade R and 00 will return to school on Monday, 6th July 2020.

“The decision affects all provinces. The other grades will be phased-in during the month of July in a differentiated approach within the stipulated time frames as per the gazette of 29 June 2020 as published by the Minister. We will adjust the reopening phases based on the risk-adjusted strategy, which is a considered attempt to balance our

Templeton Drive, Grahamstown • PO Box 281, Grahamstown, 6140

info@graemecollege.co.za • www.graemecollege.co.za • Tel: 046 622 7227 • Fax: 046 622 7491

our approach to school re-opening, taking into account all factors that affect the work we do. We are guided in this by an observation of the rising numbers of community transmissions throughout the country. We recognize that schools are based in communities and learners live in the same affected communities and therefore a careful balancing act must be maintained”

We apologize for the inconvenience and we do realise that the indecisiveness leads to much frustration and increased anxiety amongst our boys and families.

Graeme College will continue to keep you updated on return dates but in the interim, teachers will be in contact with the learners regarding distance learning.

Request from parent to keep boys at home:

We have had a few requests from parents with regards to the option of “home-schooling” their children, as opposed to sending them back as part of the departmental return dates.

The concerns of parents have been compounded by the media and the uncertainty about the reopening of schools, schools’ readiness, unions’ demands and insufficient communication by the National and Provincial Education Departments. This is not helping to allay parents and learners’ fears. Therefore, we must have empathy with our families.

As a school we are sensitive to specific family requests and circumstances, and therefore request those families who are considering keeping their boys at home to please email the headmaster (k.watson@graemecollege.co.za) with the necessary motives/reasons which may or may not include a doctors/medical certificate.

The school will send out a departmental template to those parents to complete, and after investigating each case individually (with the help of the Education Department) parents will be informed as to how the school can assist the learner during these uncertain times.

Please feel free to contact the school should you have any questions or concerns. We are a family school, and we want to keep supporting our community in this difficult time.

K.Watson
Headmaster

Academic:

CAT:

All CAT boys must bring their own headphones / earphones to school for CAT. A lot of the instruction is now video based, due to the differentiated learning and you will struggle if you do not have them with you.

Update on Grade 12s, Grade 11s and Grade 10s returning to school:

The Grade 12s are well into catching up the work that they need to and the date of their preliminary examinations is starting to get closer. Having the Grade 11s back has also allowed for them to acclimatise to the new way that things work. On Friday 3 July, the Grade 10s came in for their orientation meeting. This was a lot to absorb and they will need to be committed if they are to finish the year off well. Their timetable (when they do return) is as follows:

TIME	MONDAY		TUESDAY		WEDNESDAY		THURSDAY		FRIDAY (to alternate between the two weeks)	
GRADE	10MW (1)	10MW (2)	10VT (1)	10VT (2)	10MW (1)	10MW (2)	10VT (1)	10VT (2)	10MW (1)	10MW (2)
									10VT (1)	10VT (2)
NOTES	Boys in GRADE 10VT who do VISUAL ART or DESIGN will do their practical at the Art School on Monday from 08h00 – 13h00						Boys in GRADE 10MW who do VISUAL ART or DESIGN will do their practical at the Art School on Thursday from 08h00 – 13h00			
07h45 - 08h35	English Room 40 LN	English Tech Room AH	English Room 40 LN	English Tech Room AH	English Room 40 LN	English Tech Room AH	English Room 40 LN	English Tech Room AH	English Room 40 LN	Life Orientation Tech Room SR
08h35 - 09h25	Maths Tech Room MW	Maths Lit Room 40 LF	Maths Room 40 MW	Maths Lit Tech Room LF	Maths Tech Room MW	Maths Lit Room 40 LF	Maths Room 40 MW/CK	Maths Lit Tech Room LF	Maths Room 40 MW/CK	Maths Lit Tech Room LF
09h25 - 10h15	Phys Sci/LS/Business Room 7/2/40 CK/DP/CN		Phys Sci/LS/Business Room 7/2/40 CK/DP/CN		Afrikaans/isixhosa Room 12/40/Tech Room FS/VT/BD		Afrikaans/isixhosa Room 12/40/Tech Room FS/VT/BD		Life Orientation Room 40 SR	English Tech Room AH
10h35 - 11h25	Hist/LS/Art/Des/Music Room 40/2/Art Room/Music Centre JP/DP/CN/SA		Hist/LS/Art/Des/Music Room 40/2/Art Room/Music Centre JP/DP/CjvR/SA		Hist/LS/Art/Des/Music Room 40/2/Art Room/Music Centre JP/DP/SA History of Art (CjvR)		Hist/LS/Art/Des/Music Room 40/2/Art Room/Music Centre JP/DP/SA History of Art CjvR		Hist/LS/Art/Des/Music Room 40/2/Art Room/Music Centre JP/DP/CjvR/SA	
11h25 - 12h15	Afrikaans/isixhosa Room 12/40/Tech Room FS/VT/BD		Afrikaans/isixhosa Room 12/40/Tech Room FS/VT/BD		Acc/Geog/CAT/Art/Des/Music 33/Tech/Lab/Art Room/Music Centre MP/JvM/AL/SA History of Art (CjvR)		Acc/Geog/CAT/Art/Des/Music 33/Tech/Lab/Art Room/Music Centre MP/JvM/AL/SA History of Art (CjvR)		Phys Sci/LS/Business Room 7/2/40 CK/DP/CN	
12h15 - 13h05	Acc/Geog/CAT/Art/Des/Music 33/Tech/Lab/Art Room/Music Centre MP/JvM/AL/JP/SA		Acc/Geog/CAT/Art/Des/Music 33/Tech/Lab/Art Room/Music Centre MP/JvM/AL/JP/SA		Phys Sci/LS/Business Room 41/2/40 CK/DP/CN		Phys Sci/LS/Business Room 41/2/40 CK/DP/CN		Acc/Geog/CAT/Art/Des/Music 33/Tech/Lab/Art Room/Music Centre MP/JvM/AL/CjvR/SA	
14h30 - 15h30	History of Design for 10MW and 10VT at JCAC									

Grade 8 and 9 Learner Support Material

With the proposed date of returning being 3 August for the Grades 8s and 9s, it will be necessary, once again, to issue them with some additional material to work from. This will happen from 13 July. The collections will take place between 13h00 and 14h00 at the usual pick-up place. Please display your son's name and class clearly on an A4 piece of paper. Please note that masks must be worn at all times and that the social distancing norms will need to be obeyed. Collection will be as follows:

DATE	GRADE
Monday 13 July	9
Tuesday 14 July	8

Proposed phased in return to school including various grade orientation plans:

Graeme College has applied for the earlier phasing in (Orientation Programme) of grades: see attached schedules as per application.

Grade 00 and R

Start Orientation:

DAY	DATE	GRADE	START	END	CLASS /GROUP	NOTES
MONDAY	6 July	00 & R	07H50	12H00	½ CLASS	Classes divided into 2 groups in a 10 day cycle

Orientation from Monday 6 July to Friday 10 July.

Set 1 Monday, Wednesday and every second Friday.

Set 2 Tuesday, Thursday and every second Friday.

Arrival between 7:50 am and 8:15 am, and departure at 12, next to the Graemian Centre.

Grade 1, 2 and 3

Start Orientation:

DAY	DATE	GRADES	START	END	CLASS /GROUP	NOTES
MONDAY	To be confirmed	1, 2 & 3	07H50	12H00	½ CLASS	Classes divided into 2 groups in a 10 day cycle

Groups : Blue Group comes Monday, Wednesday, Friday during week one, with Gold Group coming Tuesday and Thursday; during the second week the Gold Group will come on the Friday.

Grade 4

Start Orientation:

DAY	DATE	GRADE	START	END	CLASS /GROUP	NOTES
MONDAY	To be confirmed	4	07H45	12H30	½ CLASS	Classes divided into 2 groups in a 10 day cycle

Groups : Blue Group comes Monday, Wednesday, Friday during week one, with Gold Group coming Tuesday and Thursday; during the second week the Gold Group will come on the Friday.

Grade 5

Start Orientation:

DAY	DATE	GRADE	START	END	CLASS /GROUP	NOTES
MONDAY	To be confirmed	5	07H45	12H30	½ CLASS	Classes divided into 2 groups in a 10 day cycle

Groups : Blue Group comes Monday, Wednesday, Friday during week one, with Gold Group coming Tuesday and Thursday; during the second week the Gold Group will come on the Friday.

Grade 6

Start Orientation:

DAY	DATE	GRADE	START	END	CLASS /GROUP	NOTES
MONDAY	06 JULY	6	07H45	12H30	½ CLASS	Classes divided into 2 groups in a 10 day cycle

Half the class (max 14 boys) to alternate, with Fridays rolling.

Groups : Blue Group comes Monday, Wednesday, Friday during week one, with Gold Group coming Tuesday and Thursday; during the second week the Gold Group will come on the Friday.

Grade 8 & 9

Start Orientation:

DAY	DATE	GRADE	START	END	CLASS /GROUP	NOTES
MONDAY	To be confirmed	8 & 9	08h20	13H05	½ CLASS	Classes divided into 2 groups in a 10 day cycle

Groups : Blue Group comes Monday, Wednesday, Friday during week one, with Gold Group coming Tuesday and Thursday; during the second week the Gold Group will come on the Friday.

Grade 10

Start Orientation:

DAY	DATE	GRADE	START	END	CLASS /GROUP	NOTES
MONDAY	To be confirmed	10	07H30	13H05	Groups	Learners divided according to class and attending on alternate days

Groups : Grade 10 MW will come to school on Monday, Wednesday, Friday during week one, with Grade 10VT coming Tuesday and Thursday; during the second week Grade 10VT will come on the Friday. Practical art lessons will take place at the art school on “off” days.

Uniform changes (from 29 June onwards):

- Full school uniforms will be worn on Mondays, Tuesdays and Fridays.
- Full school tracksuit will be worn on Wednesdays and Thursdays.

Campus Facilities:

- Unfortunately, a reminder that all campus facilities are off limits/ out of bounds to our community members; as per the state regulations.
- Mr Watson has allowed affiliated coaches and staff to use various facilities, adhering to strict protocols which are busy being established depending on the facility.
- Sadly, this is very much out of our control, and in the meantime we are going to ask parents to be patient, as we work through the logistics of this.
- Slowly but surely the Graeme staff, will get our learners involved in activities that will have very strict social distancing and sanitization procedures.
- The safety of our learners and community members is always our priority.

Website update & academic progress

We are attaching a breakdown from teachers in specific areas to this newsletter.

Kindly refer to that document re academic work that needs to be covered. As mentioned last week, we have launched our new website and are currently getting it up to date. Follow the link below for e-learning and online resources:

<https://www.graemecollege.co.za/online-resources/>

Mr Wille has also created a Youtube channel solely devoted to Graeme College training Videos. This will allow him and others to upload videos for our students. This is not a channel to put links on to other Video channels but is designated for Graeme College created videos only.

The Department has released the list of websites that are zero-rated. Zero rating means that the person visiting the site does not use any data to view or download documents.

The full zero-rated list is available at <https://bit.ly/zeroratedsites>.

Finance

FEES AND OTHER CHARGES FOR 2020:

Full settlement of annual school fees on or before the first day of the school year, or entrance into school.

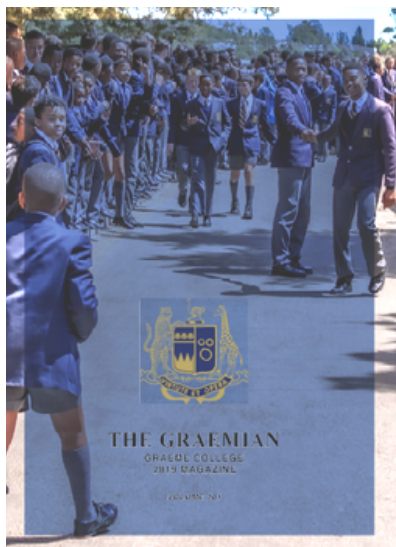
- Monthly payments per written request in January (of each year) to the School Bursar [R2 000 on first day of first term and balance in 10 [ten] equal monthly instalments at the start of each month [01 February – 01 November].
- Defaulters: Both biological parents / legal guardians are responsible for fees, irrespective of marital status. Non-payment of accounts will be dealt with as per School policy.

BANK DEPOSITS:

Please use your sons name and surname as the reference. Unfortunately, we are unable to credit your account if there is no reference to your son. We receive far too many references as “Graeme College, GJG, School Fees, etc”.

Kindly remember, there are 650 learners in the school and without the correct reference, it's impossible to allocate the fees to the correct account.

A big thank you to those who understand the financial implications of the current lockdown restrictions and who continue to pay their school fees monthly.



2019 School Magazine:

The school magazine is available to buy. School magazines fill an important niche in any school's culture. They are a window on the School's activities throughout the year and provide the most accessible historical record for the refreshing of memories.

This issue of The Graemian will find its way into the Grahamstown community, the surrounding areas and wherever Old Graemians have taken root, both in South Africa and overseas.

The purchase price of the 2019 Magazine is R150. For now, parents can pay via EFT using the learners name as the reference: Learners initial, surname and magazine. It will be ready for collection when school re-opens.

Grade 7s

Below are the 'Champion's League Top 10 Academic Performers'.



From left to right: Zipho Ntlokwana, Chris McLean, Cullen Goliath, Nic McKeown, Matthew Koopman, Jesse McConnachie, Kahlell Taylor, Roman Prevec, Leon Mwepu, Joy Mukenge.



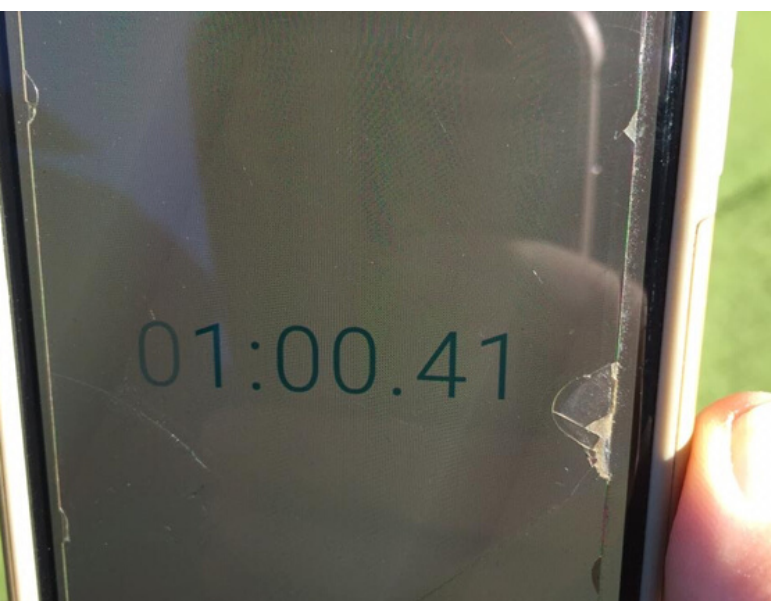
The above photo are the boys who achieved 'Top 5 for praiseworthy effort'.
From left to right: Andrew Isaacs, Duncan McLeod, Khazimla Ntlabati, Mikhulu Hoboshe, Lwandle Dlamini

Templeton Drive, Grahamstown • PO Box 281, Grahamstown, 6140

info@graemecollege.co.za • www.graemecollege.co.za • Tel: 046 622 7227 • Fax: 046 622 7491

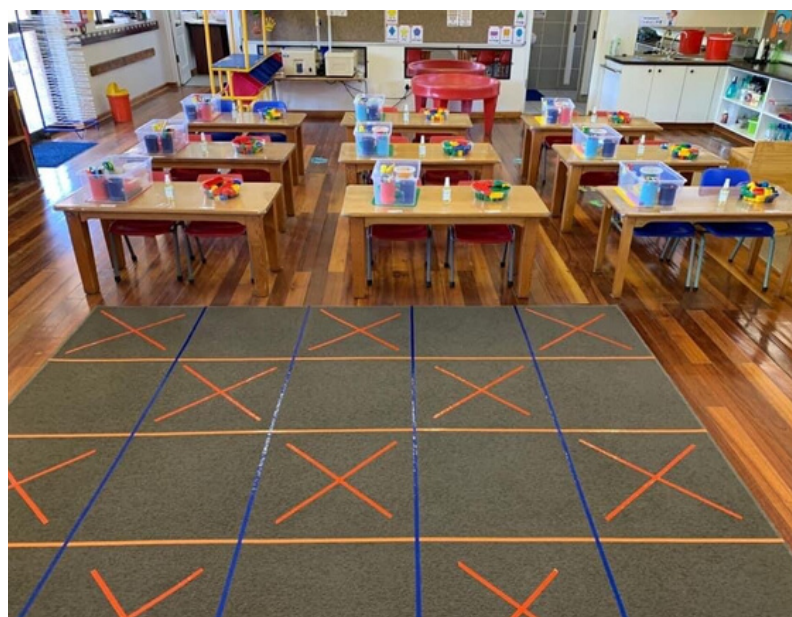
Grade 7s

The fastest cubester in the west has been decided! 1st place with a time of 1:00.41 (that's just over a minute) was winner, Ali Rizvi. 2nd place was Damien Swart and 3rd place was Jesse McConnachie. Well done boys on your Rubik's cube competition.



Grade 00s

The Grade 00s have had a zoom meeting this week, discussing masks, social distancing and what to expect at school drop off next week. Below are some photos of the classroom, prepared and ready for the boys' return.



Staff news



Mrs Jacqui Flowerday joined our Foundation Phase in July 2018, where she taught the Grade Rs and later Grade 1. She quickly crept into the hearts of those in her care and her meticulous attention to detail ensured well organized and colourful classrooms. Strong bonds were formed with colleagues and we are sad to say good-bye to her. We wish her well for the future and thank her for the contribution that she's made to the life of the boys at Graeme College.

Grant House

Exciting times in Grant House at Graeme College. Boarding at Graeme is a great place to be. Please contact Mike Pretorius if you are interested in the boarding option. Please share the info below with anybody who might be interested. Grant House has become a fantastic 'home away from home'. So many exciting changes so please pop in and see the new look Grant House.



Grant House

Exclusive boarding facility to Graeme College (est 1873) now has limited places for 2021. Apply now to avoid disappointment.



Grant House hostel (est 1975) prides itself on providing a safe and nurturing environment that caters for boys from Grade 4-12. With access to all that Graeme College has to offer, as well as having its own facilities, Grant House enables young men to make the most of their future.

Enquiries: m.pretorius@graemecollege.co.za

Templeton Drive, Grahamstown • PO Box 281, Grahamstown, 6140

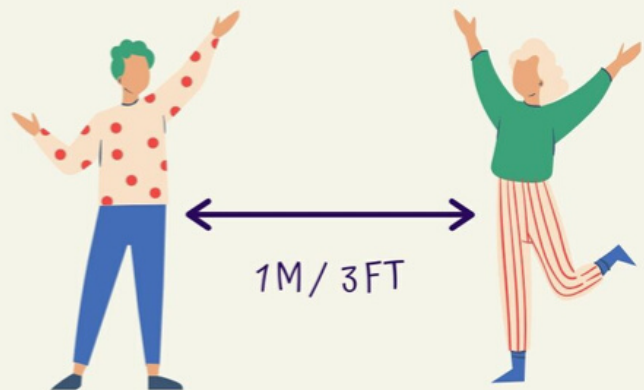
info@graemecollege.co.za • www.graemecollege.co.za • Tel: 046 622 7227 • Fax: 046 622 7491

STOP THE SPREAD



WASH YOUR HANDS FREQUENTLY

Regularly and thoroughly clean your hands with an alcohol-based hand rub or wash them with soap and water.



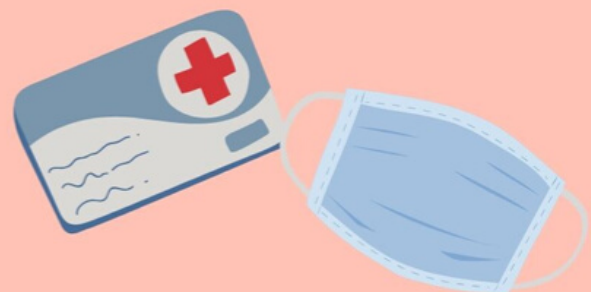
MAINTAIN PHYSICAL DISTANCING

Maintain at least 1 metre (3 feet) distance between yourself and anyone who is coughing or sneezing.



AVOID TOUCHING EYES, NOSE AND MOUTH

Hands touch many surfaces and can pick up viruses. Once contaminated, hands can transfer the virus to your eyes, nose or mouth.



IF YOU HAVE A FEVER, COUGH AND DIFFICULTY BREATHING, SEEK MEDICAL CARE EARLY

Stay home if you feel unwell. If you have a fever, cough and difficulty breathing, seek medical attention and call in advance.

Source: World Health Organization