

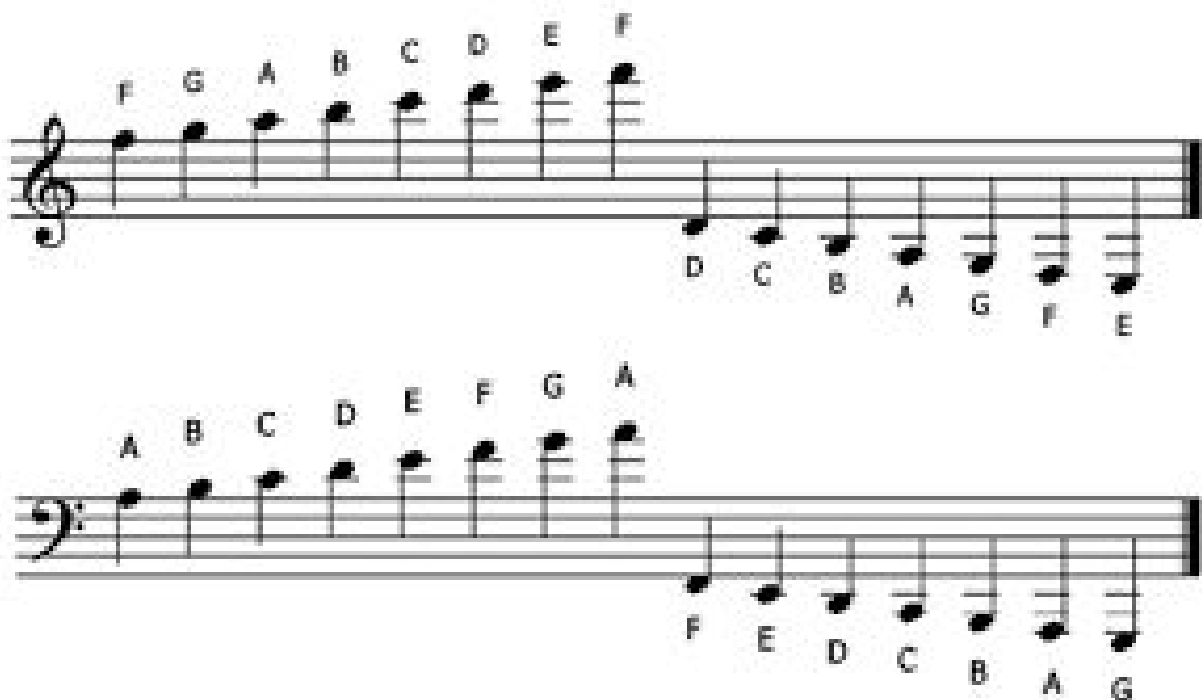
GRADE 8

CREATIVE ARTS MUSIC

LEDGER LINES AND DOTTED NOTES

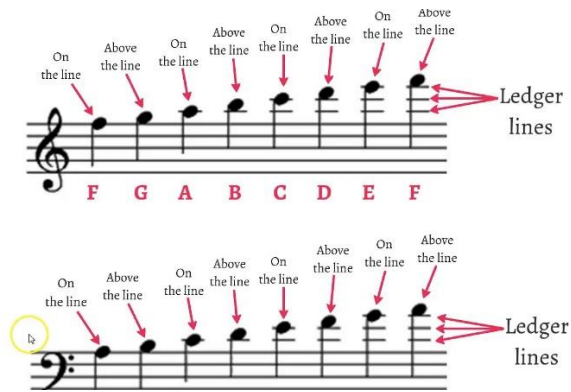
Ledger Lines

What happens when you have a note that is too high or too low for the staff? This is where ledger lines come in. Have a look at the picture below:



Ledger lines are lines located outside of the normal range for the staff that extend above or below the normal lines to include other notes that are not on the normal staff. The picture above shows us that if we go up or down in steps (line-space-line-space) we will follow the normal alphabet. Look at the treble clef, F G **A** B C D E F ..., that is the alphabet. When we go **below** the staff we go **backwards** through the alphabet. Just like the second method we learned for letternames. The lines themselves are much shorter than the lines on the staff because they are just for the one note instead of a whole line of music.

Remember that we still have **lines and spaces** in the ledger lines.



Dotted Notes

A dot adds on half of whatever it is next to. That might sound very strange but have a look below:



This is a minim.
A minim is held
for **2** beats.



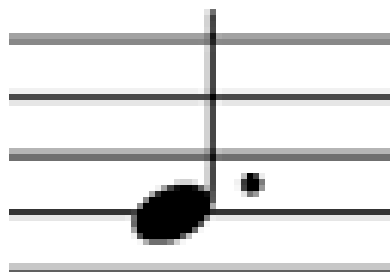
This is a dotted minim. A normal minim is held for **2** beats but we have a dot added. A dot adds half of whatever it is next to. Currently it is next to a **2** beat note. What is half of **2**? Add that on!



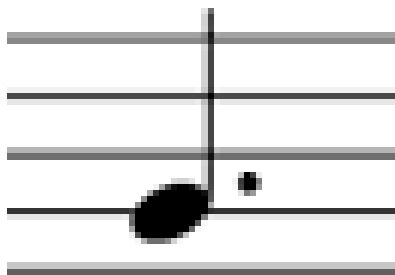
$2 + 1 = 3$ beats



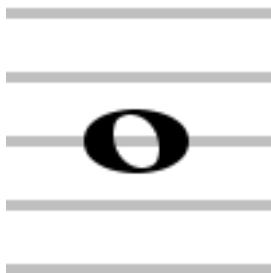
This is a crotchet.
A crotchet is held
for **1** beat.



This is a dotted crotchet. A normal crotchet is held for **1** beat, but we have a dot added. A dot adds half of whatever it is next to. Currently it is next to a **1** beat note. What is half of **1**? Add that on!



$$1 + \frac{1}{2} = 1 \frac{1}{2} \text{ beats}$$



This is a semibreve. It is held for **4** beats.



This is a dotted semibreve. A normal semibreve is held for **4** beat, but we have a dot added. A dot adds half of whatever it is next to. Currently it is next to a **4** beat note. What is half of **4**? Add that on!



$$4 + 2 = 6 \text{ beats}$$